

ENCINO MEDICAL TOWER

16260 VENTURA BLVD
ENCINO, CA 91436

FOR LEASE



AVAILABILITIES

Available Space:

SUITE #	RATE	SIZE
225	\$3.25/SF, FSG	948 SF
430	\$3.25/SF, FSG	1,037 SF
625A	\$3.25/SF, FSG	1,014 SF
630	\$3.25/SF, FSG	600 SF

Highlights:

- Across the Street from Encino Hospital
- Class "A" Medical Building & Ownership
- Building Management on Premises
- Building Renovation - 2015
- Pharmacy on Ground Floor

For more information, contact:

ADAM COMORA

Senior Vice President
c. 818 521 2623 | o. 818 742 1610
acomora@naicapital.com | Cal DRE Lic#01312271

PROPERTY PHOTOS



PROPERTY PHOTOS



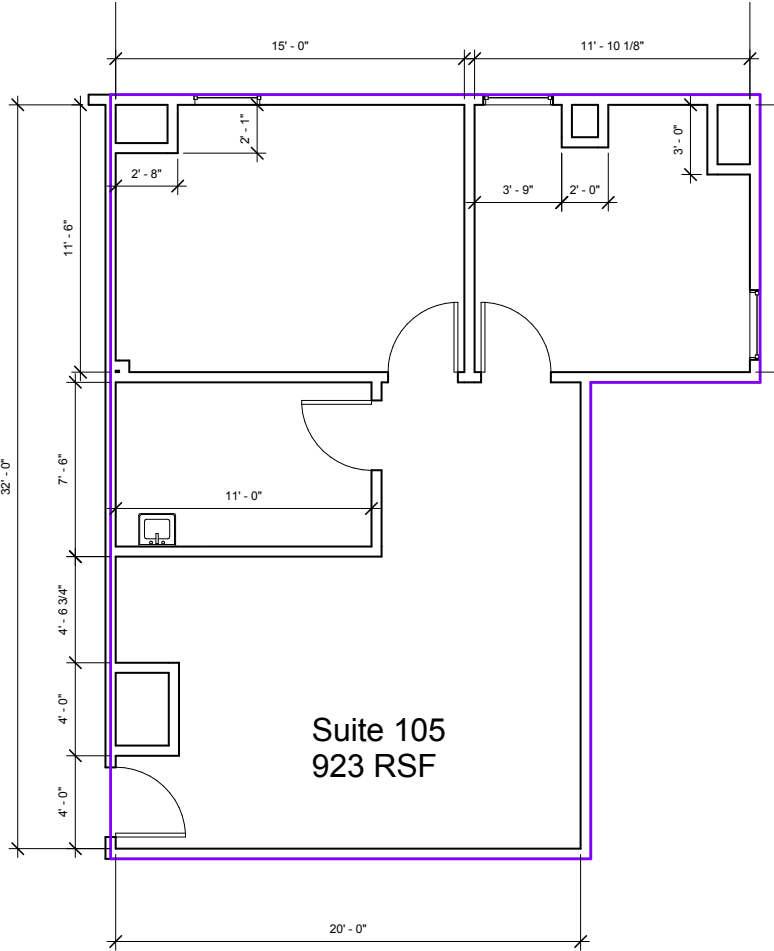
FLOOR PLAN

1st Floor



SUITE 105 • ± 960 SF

Not to scale and may not be accurate. For illustration purposes only.

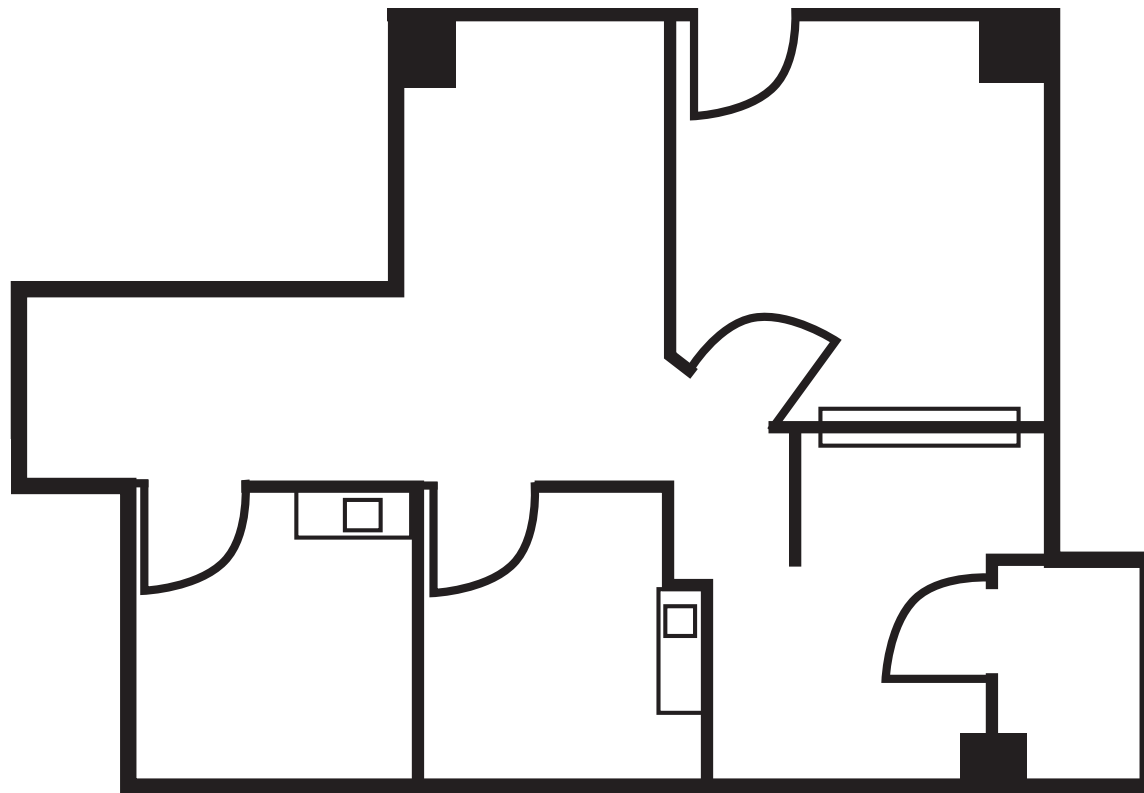


FLOOR PLAN

2nd Floor

SUITE 225 • ± 948 SF

Not to scale and may not be accurate. For illustration purposes only.

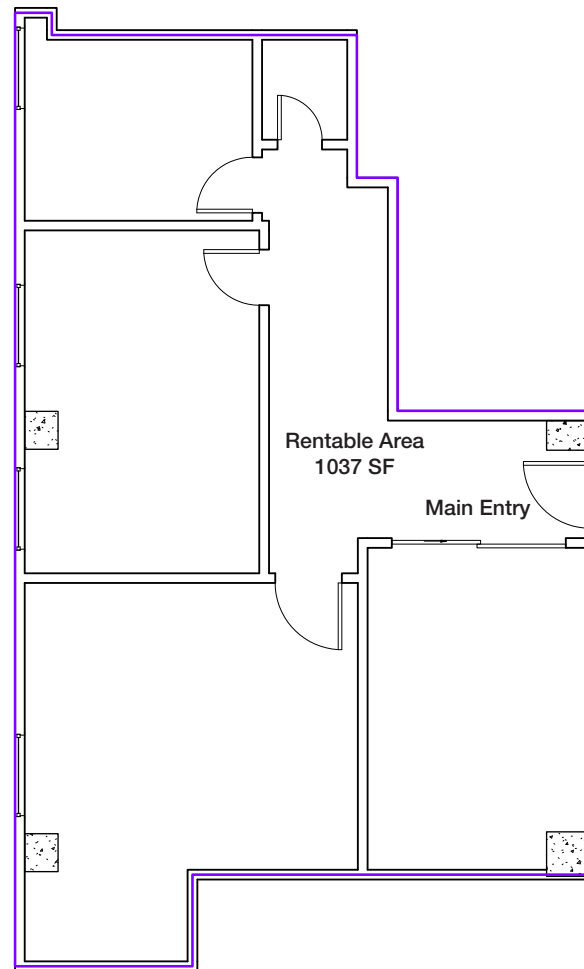


FLOOR PLAN

4th Floor

SUITE 430 • ± 1,037 SF

Not to scale and may not be accurate. For illustration purposes only.



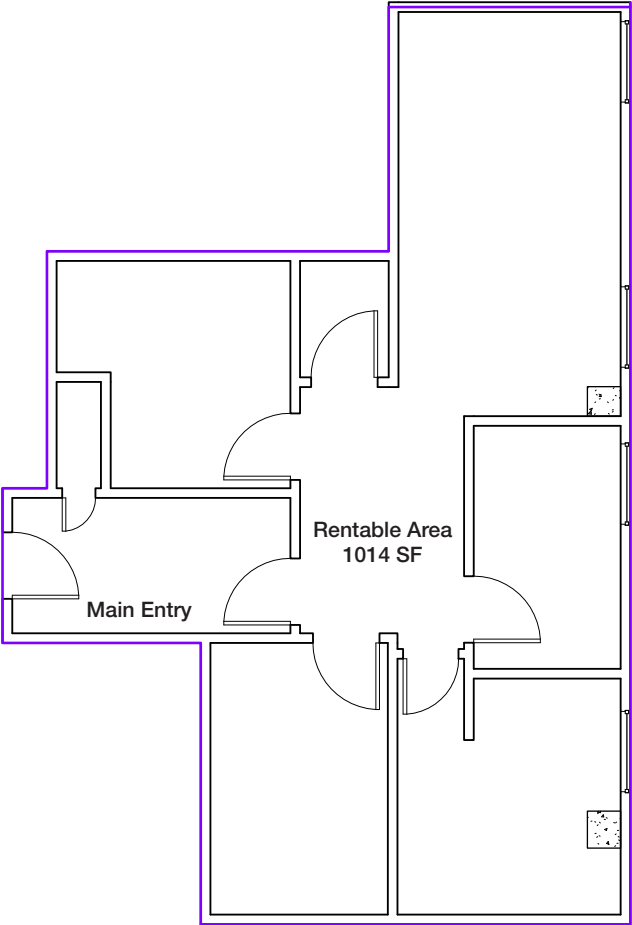
FLOOR PLAN

6th Floor



SUITE 625A • ± 1,014 SF

Not to scale and may not be accurate. For illustration purposes only.

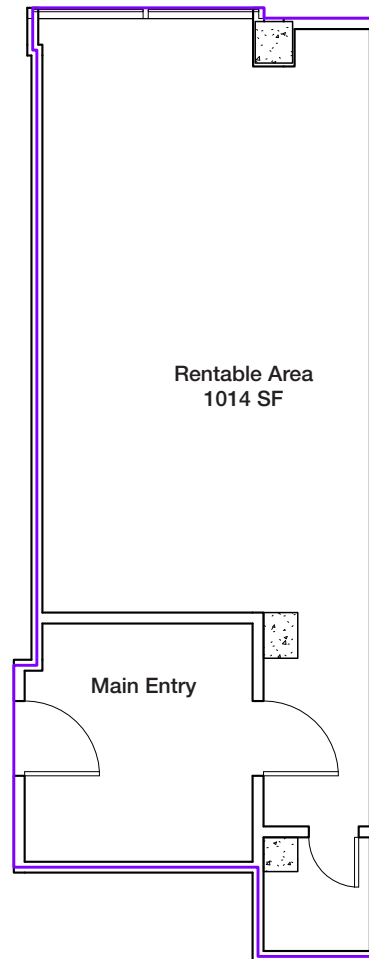


FLOOR PLAN

6th Floor

SUITE 630 • ± 600 SF

Not to scale and may not be accurate. For illustration purposes only.



ENCINO MEDICAL TOWER

16260 VENTURA BLVD
ENCINO, CA 91436

THE BOULEVARD TEAM

LEASING AND SALES EXPERTS

ADAM COMORA

Senior Vice President

c. 818 521 2623 | o. 818 742 1610

acomora@naicapital.com | Cal DRE Lic#01312271

NAICapital

COMMERCIAL REAL ESTATE SERVICES, WORLDWIDE

No warranty, express or implied, is made as to the accuracy of the information contained herein. This information is submitted subject to errors, omissions, change of price, rental or other conditions, withdrawal without notice, and is subject to any special listing conditions imposed by our principals. Cooperating brokers, buyers, tenants and other parties who receive this document should not rely on it, but should use it as a starting point of analysis, and should independently confirm the accuracy of the information contained herein through a due diligence review of the books, records, files and documents that constitute reliable sources of the information described herein. NAI Capital CA DRE #01990696