

**811 W 7th**

The Fine Arts Building



## ICONIC CREATIVE OFFICE AVAILABLE NOW

**FIRST TIME IN A DECADE**  
±28,044 RSF contiguous  
creative office on 3 full floors

Exclusively listed by:

**Gibran Begum**

Executive Vice President

[gbegum@naicapital.com](mailto:gbegum@naicapital.com)

Direct: 310.806.6109

Mobile: 310.922.0756

DRE Lic#: 01455990

[finearts811.com](http://finearts811.com)

**NAI Capital**  
COMMERCIAL REAL ESTATE SERVICES, WORLDWIDE



**MANCHESTER**  
CAPITAL MANAGEMENT

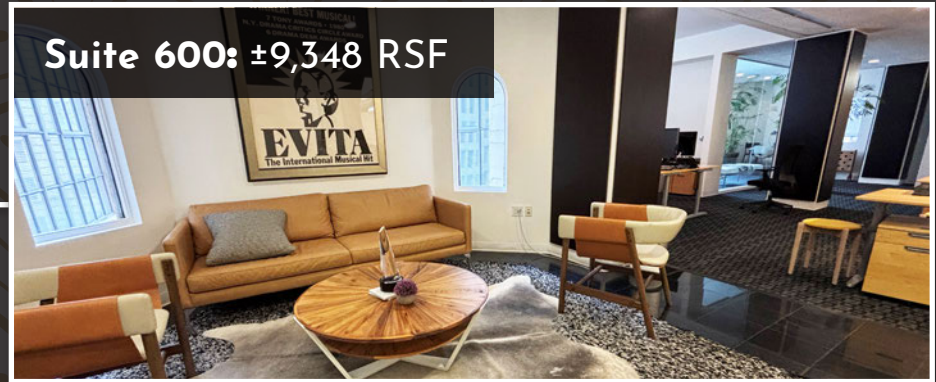


# HIGHLIGHTS

Features include creative plug-in play office space with original '20s exposed brick walls, contemporary mix of concrete & wood flooring and exposed ceiling areas.

**±28,044 RSF CONTIGUOUS ON 3 FLOORS**

**Suite 600: ±9,348 RSF**



**Suite 500: ±9,348 RSF**



**Suite 400: ±9,348 RSF**



**Suite 750: ±2,275 RSF**

7

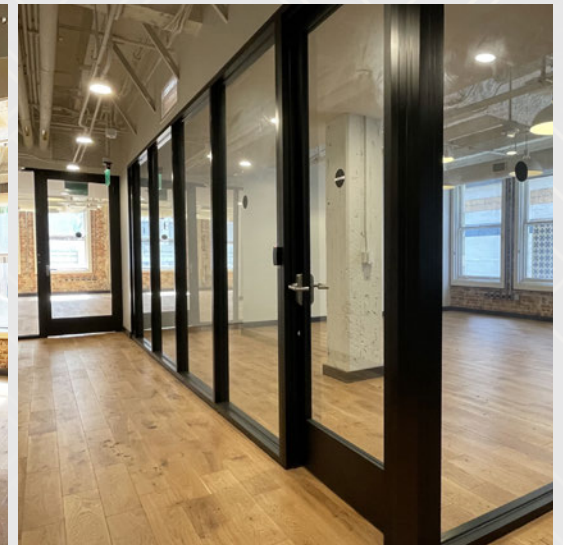
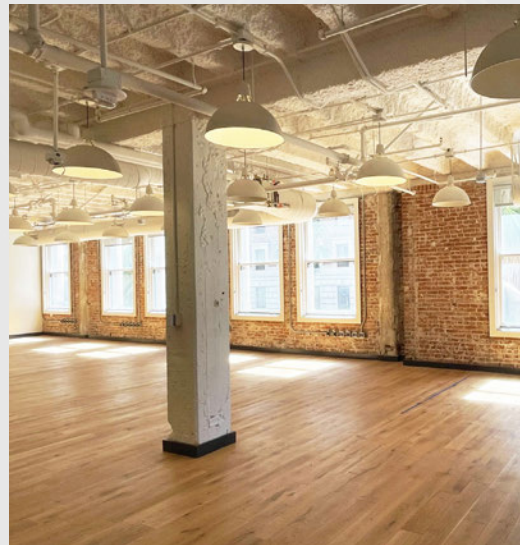
6

5

4



# 4TH FLOOR



\*Note: actual floor layout may vary slightly from the plans below



811 W 7TH - THE FINE ARTS BUILDING | 3

**NALCapital**  
COMMERCIAL REAL ESTATE SERVICES, WORLDWIDE

**MANCHESTER**  
CAPITAL MANAGEMENT



# 5TH FLOOR



*\*Note: actual floor layout may vary slightly from the plans below*



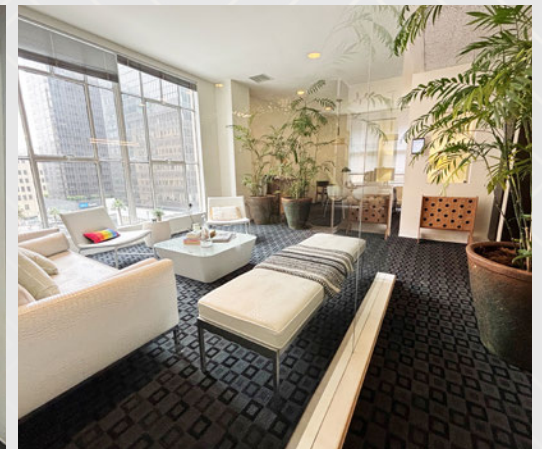
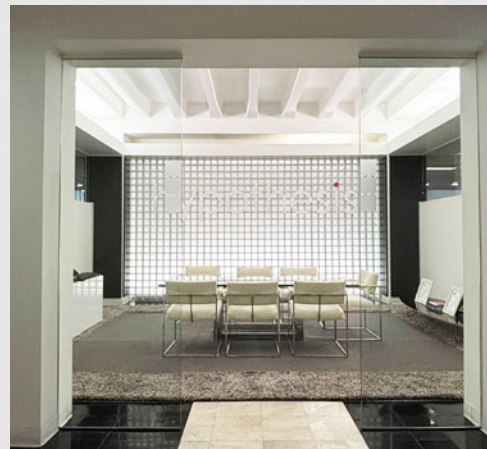
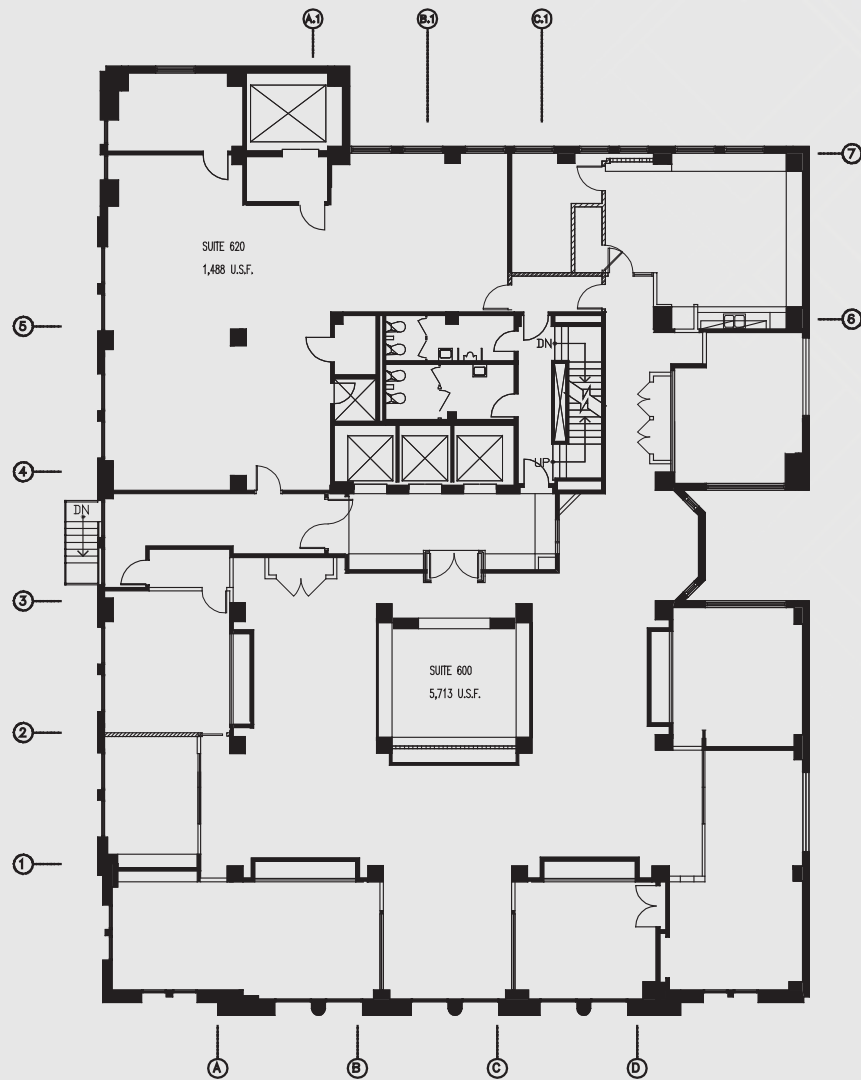
811 W 7TH - THE FINE ARTS BUILDING | 4

**NALCapital**  
COMMERCIAL REAL ESTATE SERVICES, WORLDWIDE

**MANCHESTER**  
CAPITAL MANAGEMENT



# 6TH FLOOR



\*Note: actual floor layout may vary slightly from the plans below

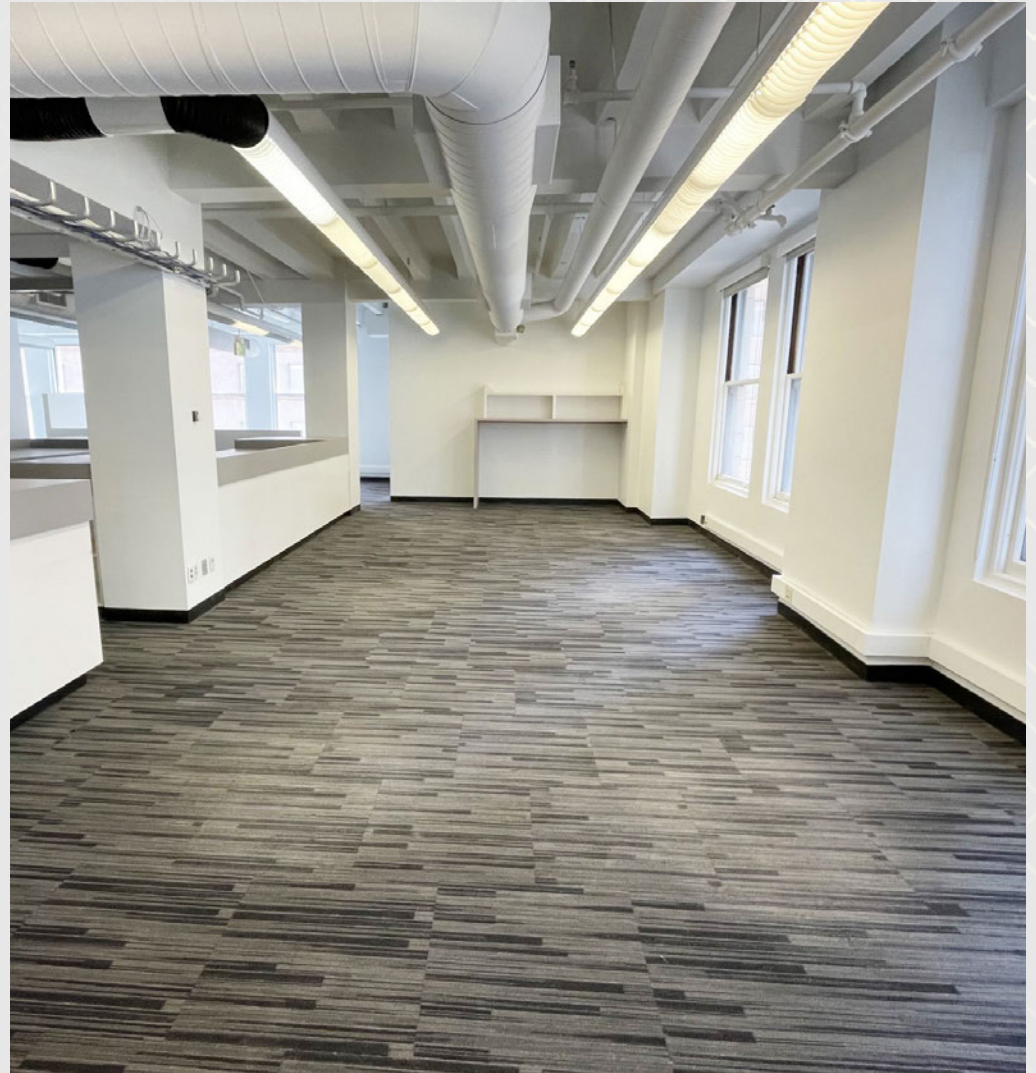


811 W 7TH - THE FINE ARTS BUILDING | 5

**NALCapital**  
COMMERCIAL REAL ESTATE SERVICES, WORLDWIDE

**MANCHESTER**  
CAPITAL MANAGEMENT

# 7TH FLOOR | SUITE 750



*\*Note: actual floor layout may vary slightly from the plans below*

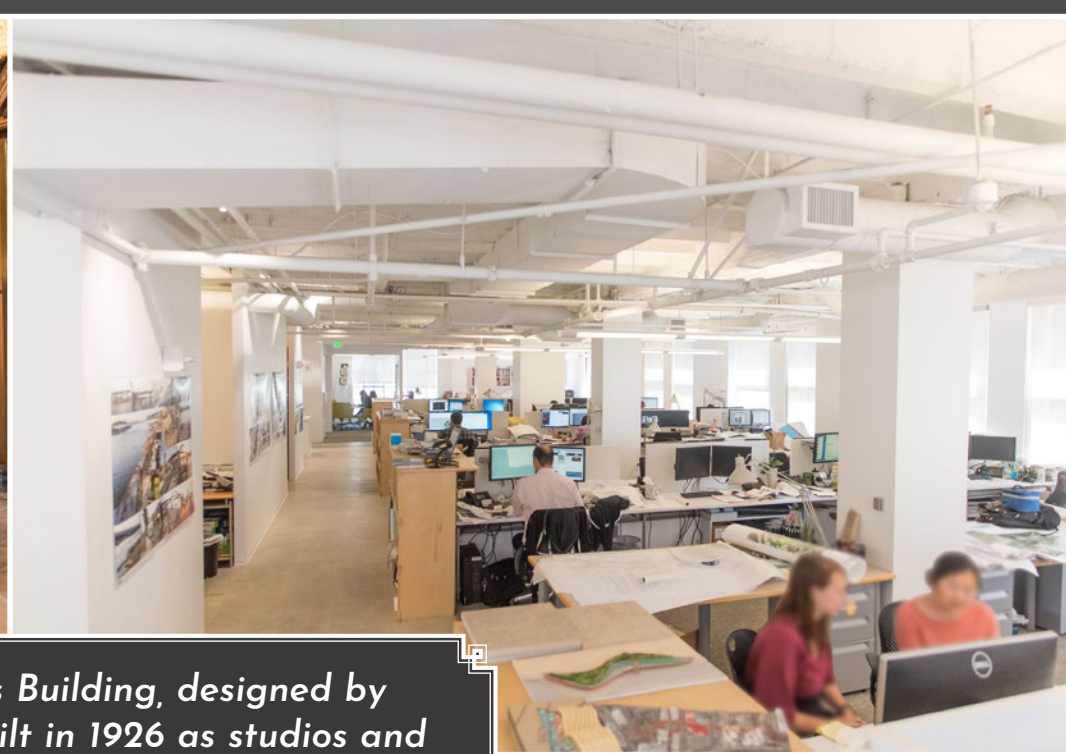
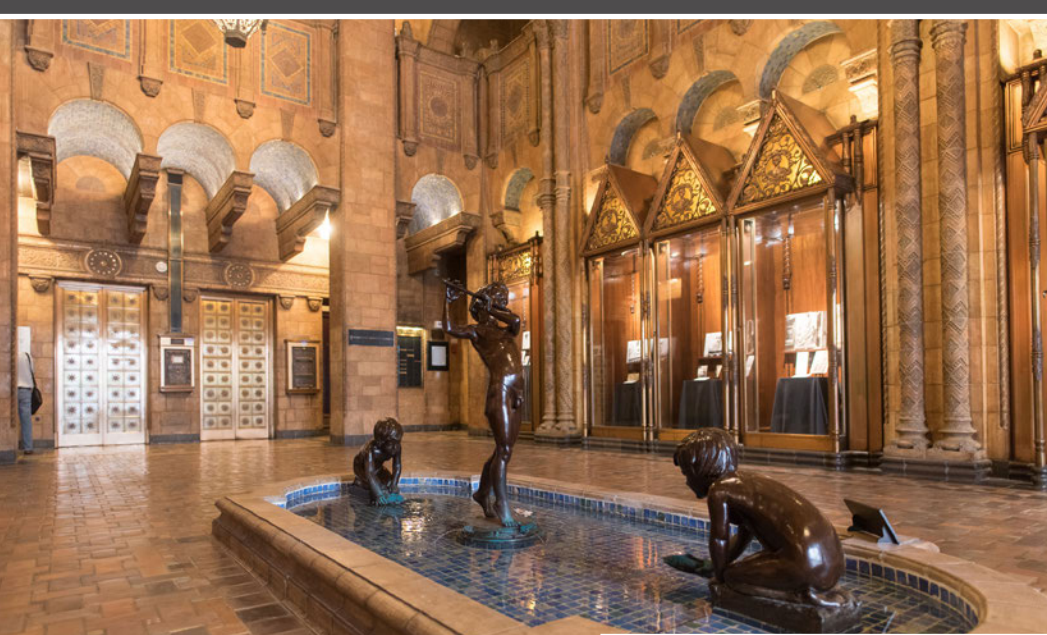


811 W 7TH - THE FINE ARTS BUILDING | 6

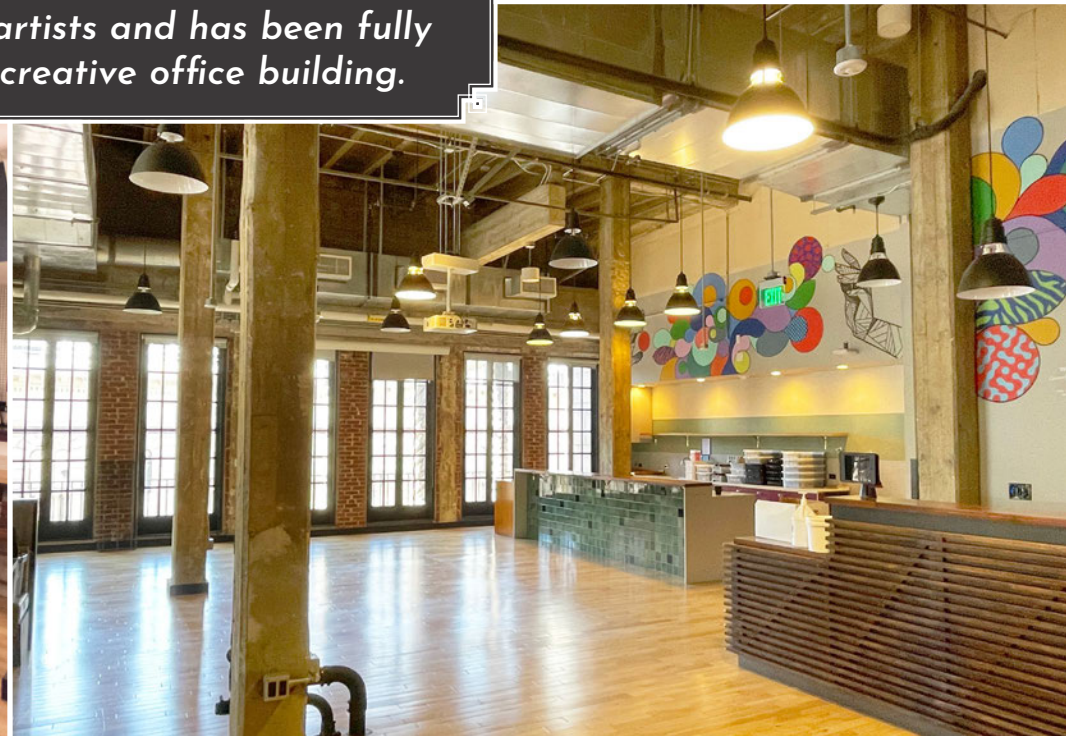
**NALCapital**  
COMMERCIAL REAL ESTATE SERVICES, WORLDWIDE

  
**MANCHESTER**  
CAPITAL MANAGEMENT

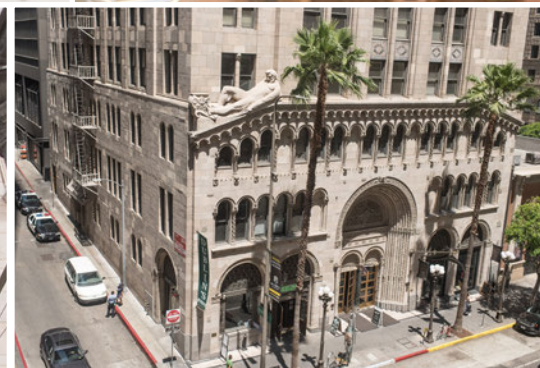
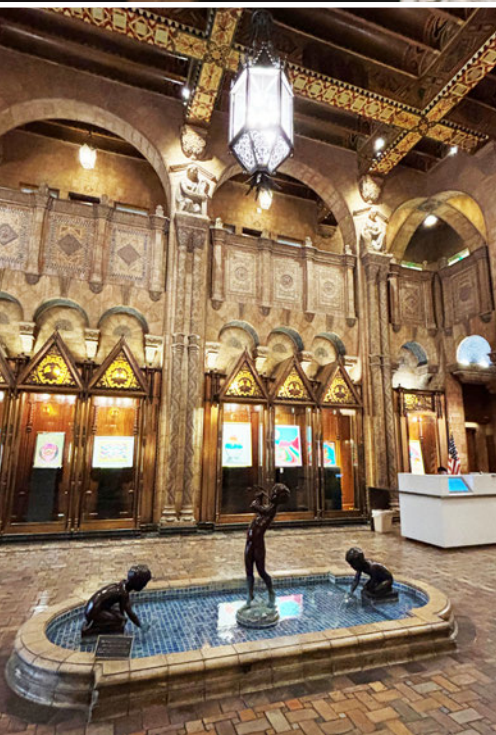




*The 13-story Fine Arts Building, designed by Walker & Eisen, was built in 1926 as studios and galleries for downtown artists and has been fully restored as a premier creative office building.*







811 W 7TH - THE FINE ARTS BUILDING | 8

**NAL Capital**  
COMMERCIAL REAL ESTATE SERVICES, WORLDWIDE

**MANCHESTER**  
CAPITAL MANAGEMENT



# LOCATION MAP







**811 W 7th**

The Fine Arts Building

# ICONIC CREATIVE OFFICE AVAILABLE NOW

**Exclusively listed by:**

**Gibran Begum**

Executive Vice President  
gbegum@naicapital.com  
Direct: 310.806.6109  
Mobile: 310.922.0756  
DRE Lic #01455990

**NAI Capital Commercial**

West Los Angeles  
11150 Santa Monica Blvd.  
Suite 1550  
Los Angeles, CA 90025  
310.806.6100

Downtown Los Angeles  
800 S. Figueroa St.  
Suite 925  
Los Angeles, CA 90017  
213.632.7700

**NAI Capital**  
COMMERCIAL REAL ESTATE SERVICES, WORLDWIDE



**MANCHESTER**  
CAPITAL MANAGEMENT

No warranty, express or implied, is made as to the accuracy of the information contained herein. This information is submitted subject to errors, omissions, change of price, rental or other conditions, withdrawal without notice, and is subject to any special listing conditions imposed by our principals. Cooperating brokers, buyers, tenants and other parties who receive this document should not rely on it, but should use it as a starting point of analysis, and should independently confirm the accuracy of the information contained herein through a due diligence review of the books, records, files and documents that constitute reliable sources of the information described herein.

Logos are for identification purposes only and may be trademarks of their respective companies. NAI Capital, Inc. Cal DRE Lic. #02130474.